

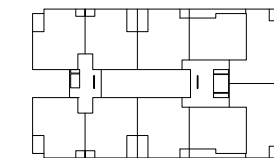
PATERNA

BY UNICO HOMES

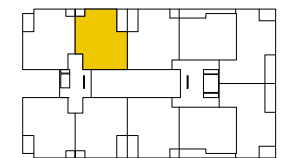
Viviendas 2A, 3A y 4A

| | |
|------------------------------|---------------------------|
| Superficie útil interior | 73.7 m ² |
| Superficie útil exterior | 8.9 m ² |
| Total superficie útil | 82.6 m² |

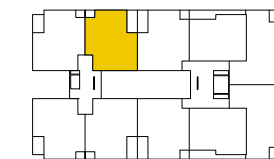
| | |
|---|-----------------------------|
| Superficie construida interior + z.c. | 106.21 m ² |
| Superficie construida terrazas | 9.67 m ² |
| Total superficie construida + z.c. | 115.88 m² |



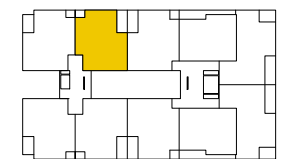
Planta 1ª



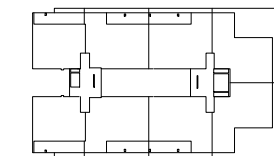
Planta 2ª



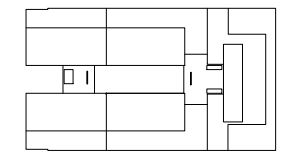
Planta 3ª



Planta 4ª



Planta 5ª



Planta Ático

ÚNICO
HOMES

